



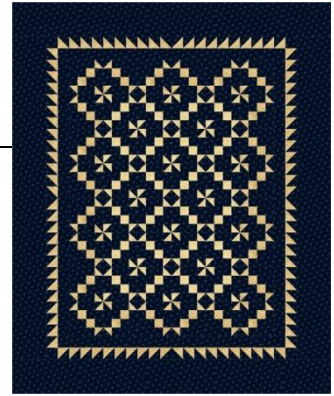
# Settler's Puzzle

## Class Supply List

---

### ★Fabrics:

- ♥ 1⅓ yards of light print for blocks and pieced borders.
  - ♥ 4¼ yards of dark print for blocks and borders.
  - ♥ ½ yard for binding.
  - ♥ 4 yards for backing.
- 



### ★Supplies You'll Need:

Settler's Puzzle pattern by **Heartspun Quilts** (available the day of class), click style pencil, basic sewing supplies, sewing machine in good working order, quarter inch foot for your machine, zip loc bags, rotary cutter and medium size mat.

Please bring an assortment of rulers. Here's my recommendations: 3½" *OR* 4½" square ruler, 6½" square ruler, 6" x 12" ruler. (I recommend Creative Grid rulers.) **Bloc Loc** ruler ~ *optional*.

---

### ★Preparations:

\* I highly recommend preparing your fabrics with spray sizing!! This step is optional, but will be an enormous help with every step of piecing. Thoroughly and evenly spray your fabric yardage before cutting!!! Press it dry with a dry iron. I use Magic Spray sizing in the blue can available at Walmart, Target, and grocery stores. You may need several cans.

\* After sizing your fabrics cut your entire quilt following the cutting directions on page 2 of this class supply list. (The cutting instructions for class differ slightly from those in the pattern.) Be sure to label all pieces with their letters and place them in zip loc bags. This will help us with assembly and make the most of our time together.

---

If you have any questions, please email me at [Pam@HeartspunQuilts.com](mailto:Pam@HeartspunQuilts.com).

I look forward to meeting you in class!!



You can order a Settler's Puzzle kit on my website at [HeartspunQuilts.com](http://HeartspunQuilts.com) ~ Click these links: Products>Pam's Fabric>Kits  
Email if you have a color or fabric preference you don't see online.



## Settler's Puzzle

### Workshop Cutting Instructions

✂ From light print:

\*Cut (4)  $3\frac{1}{4}$ " x WOF strips; subcut (46)  $3\frac{1}{4}$ " squares for HST in pieced borders.

\*Cut (4)  $2\frac{5}{8}$ " x WOF strips; subcut (24)  $2\frac{5}{8}$ " squares for (C) Half Square  
Triangles (HST).  
; subcut (24)  $2\frac{5}{8}$ " squares for (I) HST.

\*Cut (5) 2" x WOF strips for (A).

\*Cut (4) 2" x WOF strips; subcut (24) 2" squares for (B).  
; subcut (48) 2" squares for (J).

✂ From dark print:

\*Cut (8)  $6\frac{1}{2}$ " x WOF strips for outside borders.

\*Cut (5) 5" x WOF strips; subcut (48) 5" x 2" rectangles for (G).  
;subcut (48) 5" x 2" rectangles for (N).

\*Cut (5)  $3\frac{1}{2}$ " x WOF strips for (F).

\*Cut (4)  $3\frac{1}{4}$ " x WOF strips; subcut (46)  $3\frac{1}{4}$ " squares for HST in pieced borders.

\*Cut (4)  $2\frac{5}{8}$ " x WOF strips; subcut (24)  $2\frac{5}{8}$ " squares for (D) Half Square  
Triangles (HST).  
;subcut (24)  $2\frac{5}{8}$ " squares for (K) HST.

\*Cut (5)  $2\frac{1}{2}$ " x WOF strips for inside borders.

\*Cut (5) 2" x WOF strips for (E).

\*From remaining scraps, cut (4)  $2\frac{1}{2}$ " squares for pieced border cornerposts.

✂ For binding:

\*Cut (7)  $2\frac{1}{4}$ " x WOF strips.

✂ Please visit my website at [www.HeartspunQuilts.com](http://www.HeartspunQuilts.com) to see all of my patterns, sign up for my newsletter, see my lecture and workshop offerings, join me as I teach at retreats or quilting cruises, and a whole lot more!

✂ Keep up with what's new from Heartspun Quilts at my blog: [www.HeartspunQuilts.Blogspot.com](http://www.HeartspunQuilts.Blogspot.com)

✂ Follow me on **Facebook** at Heartspun Quilts Pam Buda

✂ Follow me on **Pinterest** ~ Pam Buda

✂ Follow me on **Instagram** ~ Heartspun Quilts Pam Buda

✂ Visit [www.MarcusBrothers.com](http://www.MarcusBrothers.com) to see my latest fabric line.