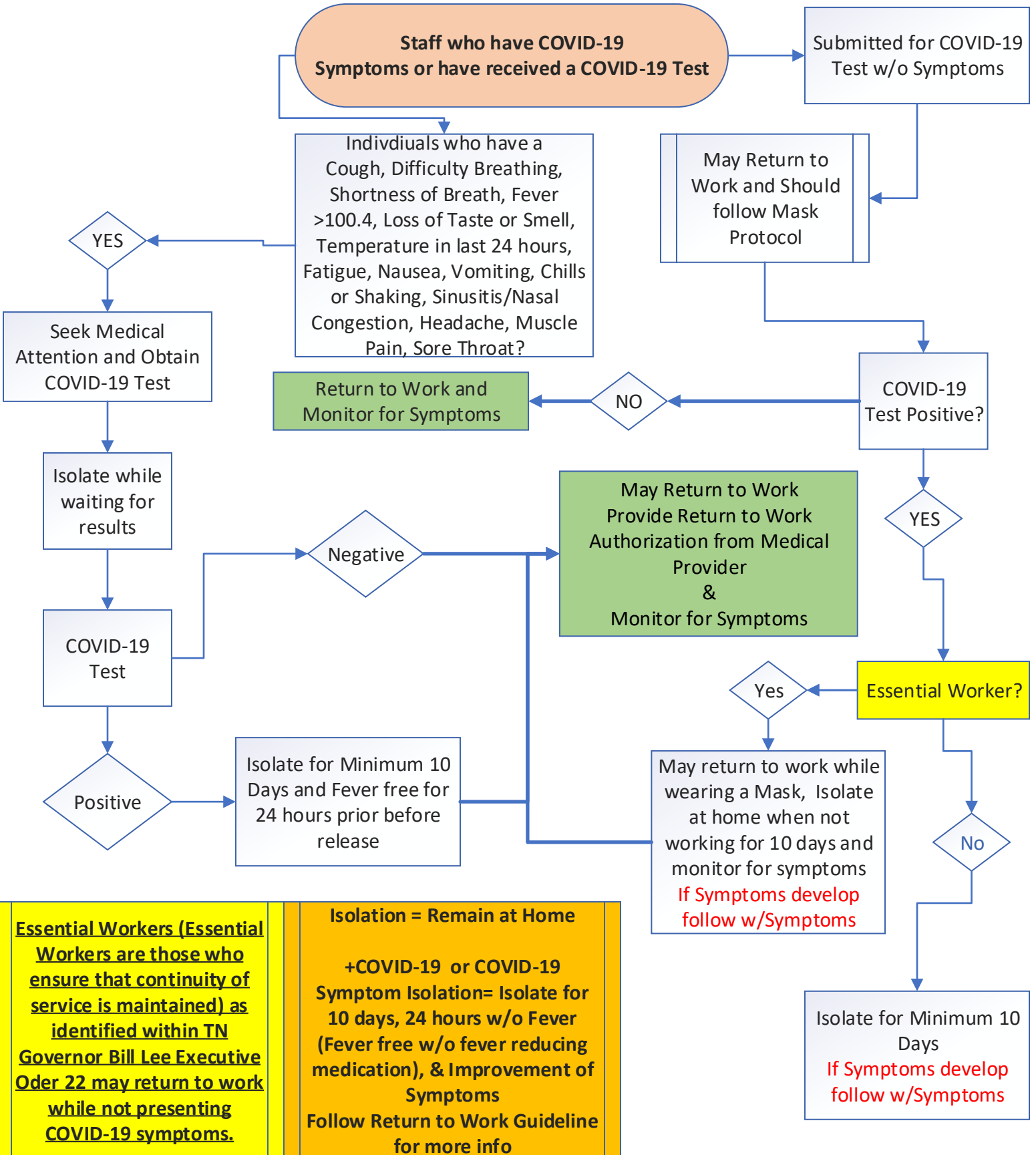


# COVID-19 Guide

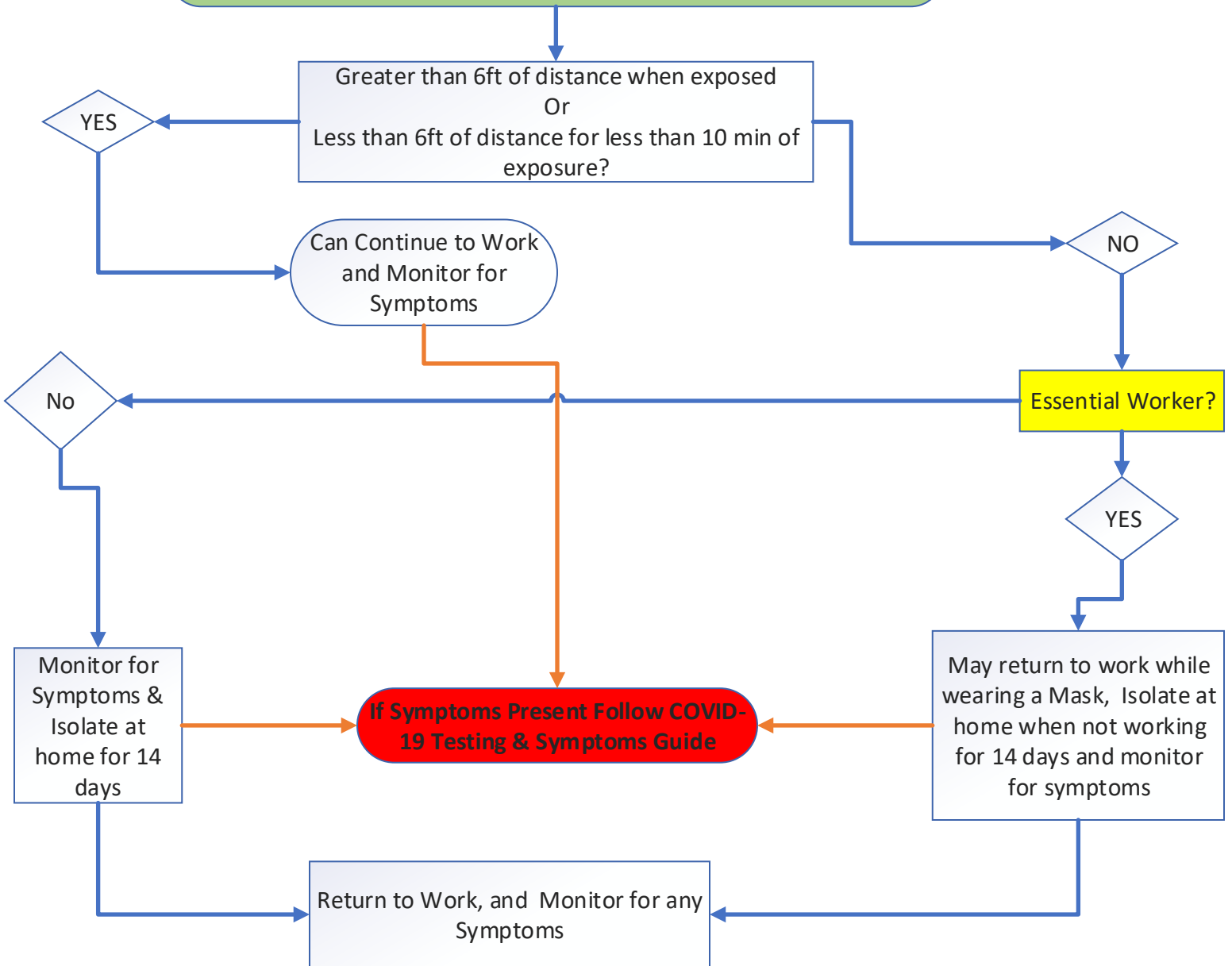
## COVID-19 Testing & Symptoms



# COVID-19 Guide

## Positive COVID-19 Exposure

Contact to a Positive COVID-19 Exposure



**Essential Workers (Essential Workers are those who ensure that continuity of service is maintained) as identified within TN Governor Bill Lee Executive Order 22 may return to work while not presenting COVID-19 symptoms.**

**COVID-19 Exposure = Direct Contact with an individual who has tested positive for COVID-19.**

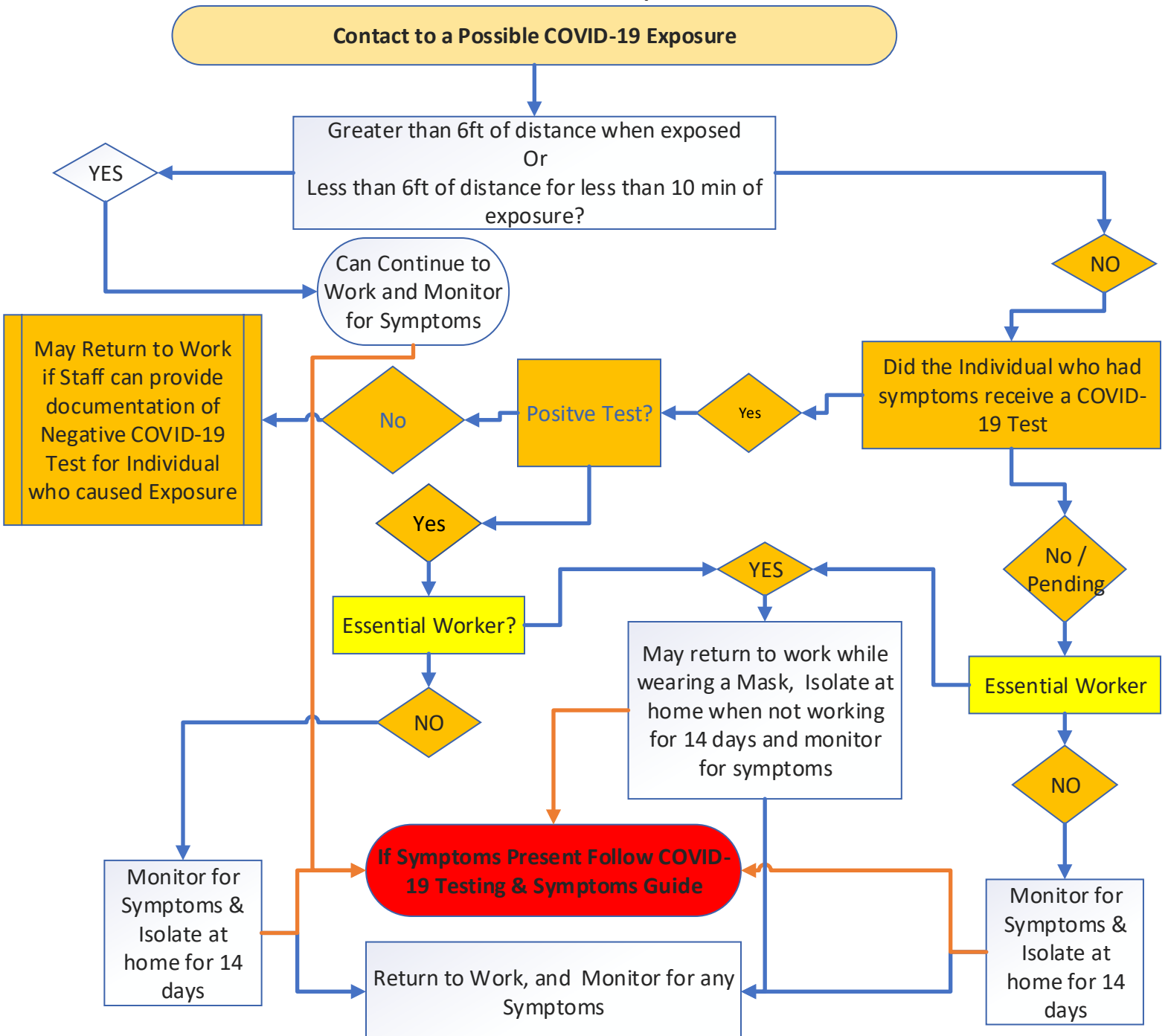
**Individuals who have been in contact with someone other than the original COVID-19 patient is not considered as an exposure**

### COVID-19 Symptoms

Cough, Difficulty Breathing, Shortness of Breath, Fever >100.4, Loss of Taste or Smell, Temperature in last 24 hours, Fatigue, Nausea, Vomiting, Chills or Shaking, Sinusitis/ Nasal Congestion, Headache, Muscle Pain, Sore Throat?

# COVID-19 Guide

## Possible COVID-19 Exposure



**Essential Workers (Essential Workers are those who ensure that continuity of service is maintained) as identified within TN Governor Bill Lee Executive Order 22 may return to work while not presenting COVID-19 symptoms.**

**Possible Exposure**= Exposure to someone who has COVID-19 Symptoms  
Anyone who exhibits COVID-19 Symptoms should submit for a COVID-19 Test. Staff should isolate while waiting for results. Essential Workers may return to work wearing a mask while waiting for results, but isolate until results are received.

**COVID-19 Symptoms**  
Cough, Difficulty Breathing, Shortness of Breath, Fever >100.4, Loss of Taste or Smell, Temperature in last 24 hours, Fatigue, Nausea, Vomiting, Chills or Shaking, Sinusitis/Nasal Congestion, Headache, Muscle Pain, Sore Throat?