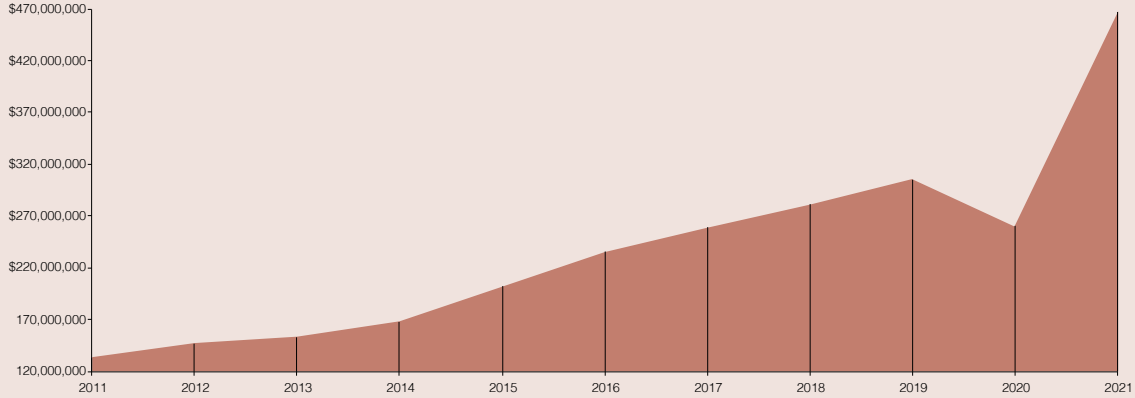




The lodging industry in Pigeon Forge continues to grow rapidly, with new properties being announced and built regularly, which includes private and chain hotel properties, cabins, campgrounds and more.

In addition to the one percent gross receipts tax, lodging properties located within Pigeon Forge collect a 2.5 percent add-on tax to the customer, applied to lodging rates only, which are collected to support the city budget. Pigeon Forge's lodging tax is one of the lowest in the state of Tennessee, especially among other cities where tourism is the main industry.

Lodging Revenue



Historic Revenue

2021*

Month	Gross Business	% Change
JAN	\$ 15,708,432	48
FEB	\$ 17,465,100	67
MAR	\$ 28,425,407	340
APR	\$ 38,708,037	1,322
MAY	\$ 36,361,762	194
JUN	\$ 51,823,715	80
JUL	\$ 65,237,365	77
AUG	\$ 41,472,870	64
SEP	\$ 39,413,087	35
OCT	\$ 48,857,595	20
NOV	\$ 40,842,170	62
DEC	\$ 43,324,294	38
TOTAL	\$ 467,639,834	80

2020*

Month	Gross Business	% Change
JAN	\$ 10,648,944	18
FEB	\$ 10,455,490	5
MAR	\$ 6,460,207	-70
APR	\$ 2,722,196	-88
MAY	\$ 12,384,252	-44
JUN	\$ 28,802,515	-17
JUL	\$ 36,822,688	-9
AUG	\$ 25,331,332	-10
SEP	\$ 29,181,876	1
OCT	\$ 40,833,314	21
NOV	\$ 25,215,933	-6
DEC	\$ 31,289,657	17
TOTAL	\$ 260,198,404	-15

2019*

Month	Gross Business	% Change
JAN	\$ 9,045,015	4
FEB	\$ 10,002,731	12
MAR	\$ 21,720,716	17
APR	\$ 22,670,834	10
MAY	\$ 21,996,089	6
JUN	\$ 34,859,531	9
JUL	\$ 40,587,762	6
AUG	\$ 28,043,233	14
SEP	\$ 28,759,674	7
OCT	\$ 33,918,833	3
NOV	\$ 26,904,919	7
DEC	\$ 26,841,308	16
TOTAL	\$ 305,350,645	9

PRIOR YEARS*

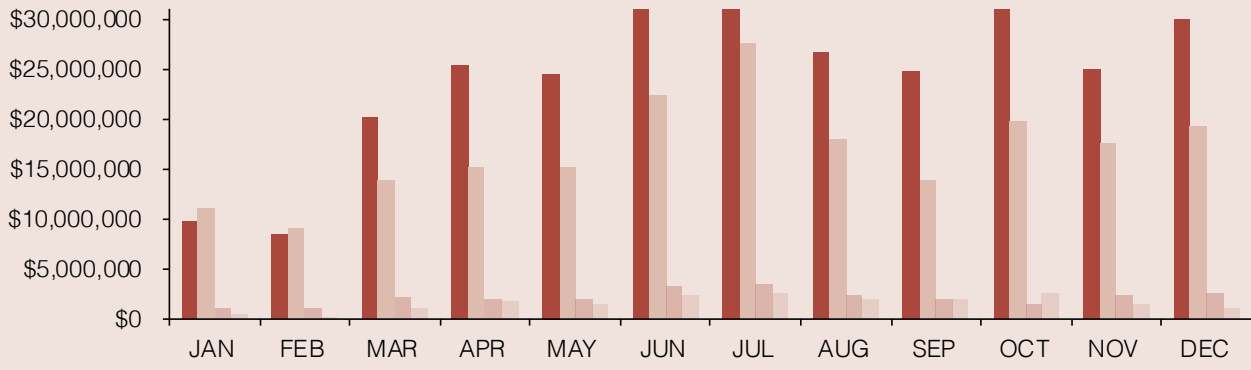
Year	Gross Business	% Change
2006	\$ 143,881,289	7
2007	\$ 148,156,932	3
2008	\$ 138,167,536	-7
2009	\$ 126,913,639	-8
2010	\$ 134,749,909	6
2011	\$ 133,185,915	-1
2012	\$ 147,295,072	11
2013	\$ 153,094,669	4
2014	\$ 167,883,605	10
2015	\$ 202,106,805	20
2016	\$ 235,357,312	16
2017	\$ 259,072,351	10
2018	\$ 280,919,407	8

*Data is based off 2.5% lodging revenue tax, provided only from properties located within the Pigeon Forge city limits



Pigeon Forge is able to break out lodging revenues by category from the 1 percent gross receipts tax, which is based on rental proceeds in addition to sales on amenities the lodging properties provide to their customers.

Lodging Revenue by Category



Legend: Hotel (Dark Red), Cabin (Light Red), Condo (Medium Red), Campground (Lightest Red)

2021

HOTEL REVENUE*		
Month	Gross Business	% Change
JAN	\$ 9,725,740	24
FEB	\$ 8,531,078	10
MAR	\$ 20,175,003	386
APR	\$ 25,468,799	7050
MAY	\$ 24,532,509	247
JUN	\$ 36,746,493	85
JUL	\$ 45,285,439	81
AUG	\$ 26,732,478	56
SEP	\$ 24,741,921	21
OCT	\$ 35,083,798	17
NOV	\$ 24,985,466	30
DEC	\$ 29,857,835	42
TOTAL	\$ 311,866,559	73

CABIN REVENUE*		
Month	Gross Business	% Change
JAN	\$ 11,048,748	55
FEB	\$ 9,157,360	77
MAR	\$ 13,887,357	116
APR	\$ 15,137,274	742
MAY	\$ 15,196,998	91
JUN	\$ 22,355,264	58
JUL	\$ 27,638,578	41
AUG	\$ 17,943,720	13
SEP	\$ 13,837,844	6
OCT	\$ 19,801,674	6
NOV	\$ 17,492,214	2
DEC	\$ 19,344,333	20
TOTAL	\$ 202,841,364	42

CONDO REVENUE*		
Month	Gross Business	% Change
JAN	\$ 1,026,384	21
FEB	\$ 1,021,345	30
MAR	\$ 2,027,380	427
APR	\$ 1,831,065	3,064
MAY	\$ 1,921,259	113
JUN	\$ 3,136,029	30
JUL	\$ 3,531,930	1
AUG	\$ 2,368,820	-16
SEP	\$ 1,901,421	-9
OCT	\$ 1,539,770	-52
NOV	\$ 2,358,418	0
DEC	\$ 2,497,709	1
TOTAL	\$ 25,161,530	15

CAMPGROUND*		
Month	Gross Business	% Change
JAN	\$ 360,285	38
FEB	\$ 255,713	30
MAR	\$ 1,011,113	312
APR	\$ 1,639,779	863
MAY	\$ 1,497,135	60
JUN	\$ 2,234,563	42
JUL	\$ 2,594,923	47
AUG	\$ 1,890,244	45
SEP	\$ 1,985,330	20
OCT	\$ 2,481,395	18
NOV	\$ 1,506,072	27
DEC	\$ 1,015,001	17
TOTAL	\$ 18,471,553	51

*Data is based on gross receipts taxed at 1%